



University of Connecticut  
*Office of the Vice President and  
Chief Financial Officer*

June 10, 2010

TO: Members of the Board of Trustees

FROM: Richard D. Gray  
Vice President and Chief Financial Officer

Paul R. McDowell  
Chief Financial Officer

RE: Spending Plan for Fiscal Year 2011 for the University of Connecticut, Storrs & Regional Campuses

RECOMMENDATION:

That the Board of Trustees approve the Spending Plan for Fiscal Year 2011 of \$1,032.5 million for the University of Connecticut, Storrs and Regional Campuses.

BACKGROUND:

The Fiscal Year 2011 Spending Plan includes \$1,033.5 million of revenue, including state funding of \$233.0 million (excluding fringe benefits), to cover \$1,047.5 million in expenses and transfers. The net loss of \$14.0 million consists of the \$1.0 million reserve repayment from the November 2001 drawdown of \$11.5 million for the Towers Dining Center and Student Union, and a \$15.0 million transfer from University operating reserves to the State General Fund as required by the 2011 State budget.

*An Equal Opportunity Employer*

352 Mansfield Road Unit 2122  
Storrs, Connecticut 06269-2122

Telephone: (860) 486-3455  
Facsimile: (860) 486-1070

# University of Connecticut (Storrs & Regional Campuses)

## Financial Assumptions Related to Development of Current Funds Budget

	Fiscal Year 2011	
	Annual	% Change
National Inflation		1.2%
Budget Inflation		
E & G University Supported Accounts		0.0%
Energy		1.4%
Fringe Benefits		2.1%
Undergraduate In-State Rate Adjustments		
Tuition		5.66%
General University Fee		4.55%
Room Fee		7.01%
Board Fee		6.01%
<b>Total Undergraduate Student Cost-% Change</b>		<b>5.96%</b>
Financial Aid (In Millions)	Fiscal Year 2011	
Need Based		
Grants	\$71.4	
Student Labor	<u>9.9</u>	
Total Need Based	\$81.3	
Scholarships		
University <sup>(A)</sup>	\$37.1	
Non-University Scholarships <sup>(B)</sup>	13.1	
Other Student Labor	7.8	
Loans	171.7	
Tuition Waivers	<u>47.4</u>	
<b>Total</b>	<b>\$358.4</b>	
Tuition Funded Need Based % / Amount <sup>(C)</sup>	17.7%	\$42.5
Enrollment Changes	Fiscal Year 2011	
	Amount	% Change
Total Enrollment (All Campuses ex UCHC)	28,935	-0.2%
Freshmen	4,350	-0.3%
Total Undergraduate	21,430	-0.3%
Graduate	6,608	0.0%
Professional (Law & PharmD)	897	0.0%
State Appropriation (In Millions)*	\$233.0	0.0%
*excludes fringe benefits and year-end accounting accruals		
Total Operating Budget (In Millions)		
Revenues	\$1,033.5	3.8%
Expenditures / Transfers	<u>1,032.5</u>	4.8%
<b>Gain Prior to Transfer</b>	<b>\$1.0</b>	
Transfer from Reserves to State General Fund	<u>(15.0)</u>	
<b>Net Loss</b>	<b><u>(\$14.0)</u></b>	

<sup>(A)</sup> Scholarships administered by the University from various sources including the UConn Foundation.

<sup>(B)</sup> Scholarships received directly by students from various sources outside the University.

<sup>(C)</sup> Based on net tuition revenue after tuition waivers.

**University of Connecticut** (Storrs & Regional Campuses)  
**Current Funds - Actual and Proposed (in millions)**  
**Fiscal Years Ended June 30, 2007-2011**

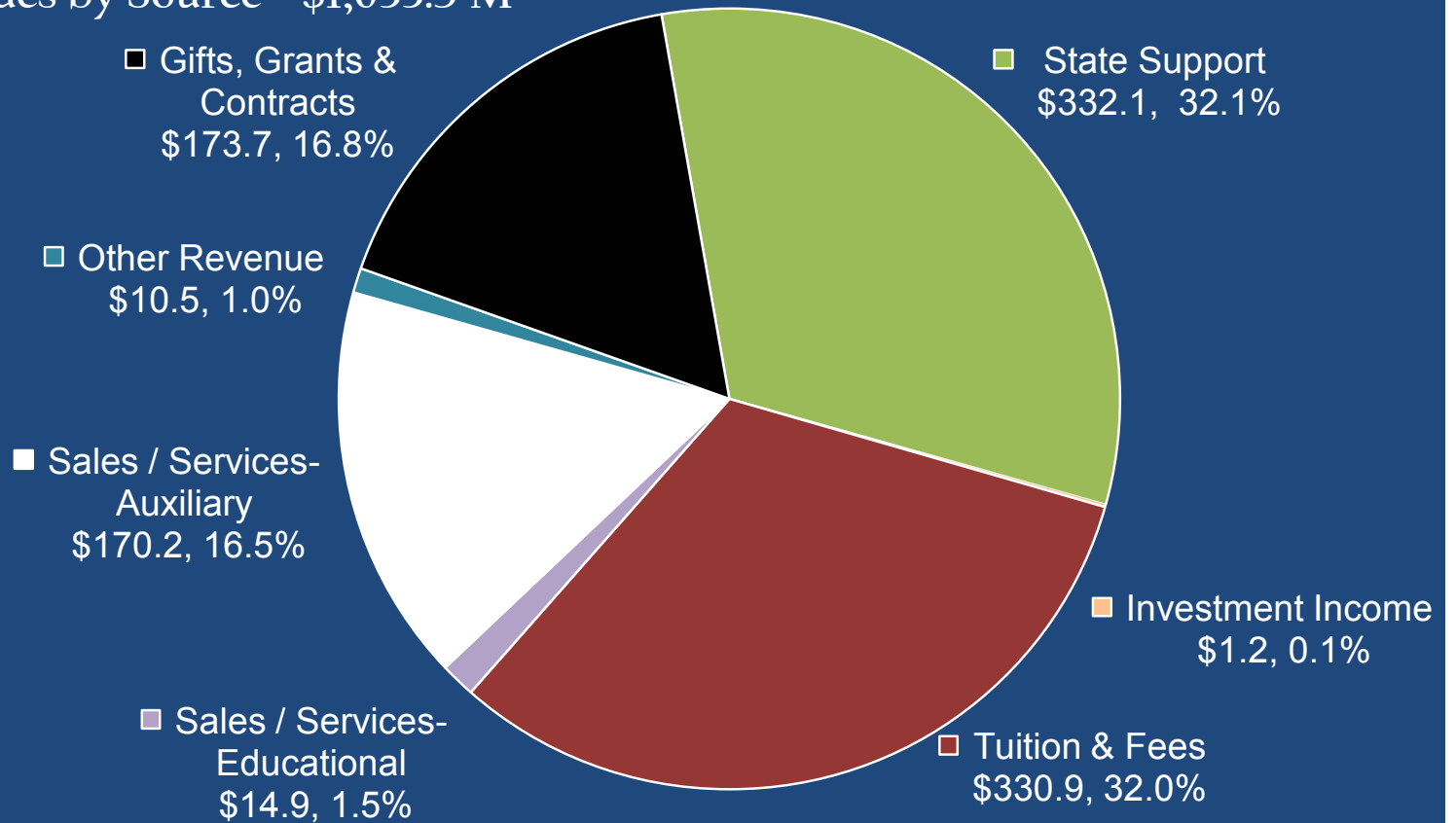
	<i>Actual</i>	<i>Actual</i>	<i>Actual</i>	<i>Forecast</i>			<i>Proposed</i>		
	<u>FY 2007</u>	<u>FY 2008</u>	<u>FY 2009</u>	<u>FY 2010</u>	<u>Change</u>	<u>%</u>	<u>FY 2011</u>	<u>Change</u>	<u>%</u>
<b>Revenues:</b>									
Operating Fund									
State Support	\$305.9	\$328.2	\$327.8	\$326.8	(\$1.0)	-0.3%	\$332.1	\$5.3	1.6%
Tuition (Net of Discounts)	177.8	190.0	210.3	226.6	16.3	7.8%	240.1	13.5	6.0%
Fees	74.6	78.9	82.9	87.9	5.0	6.0%	90.8	2.9	3.3%
Auxiliary Enterprise Revenue	130.0	136.0	152.4	163.3	10.9	7.2%	170.2	6.9	4.2%
All Other Revenues	<u>102.2</u>	<u>109.3</u>	<u>105.6</u>	<u>103.6</u>	<u>(2.0)</u>	-1.9%	<u>105.5</u>	<u>1.9</u>	1.8%
Total Operating Fund	\$790.5	\$842.4	\$879.0	\$908.2	\$29.2	3.3%	\$938.7	\$30.5	3.4%
Research Fund	<u>71.8</u>	<u>72.9</u>	<u>80.6</u>	<u>87.8</u>	<u>7.2</u>	8.9%	<u>94.8</u>	<u>7.0</u>	8.0%
<b>Total Revenues</b>	<b>\$862.3</b>	<b>\$915.3</b>	<b>\$959.6</b>	<b>\$996.0</b>	<b>\$36.4</b>	<b>3.8%</b>	<b>\$1,033.5</b>	<b>\$37.5</b>	<b>3.8%</b>
<b>Expenditures / Transfers:</b>									
Operating Fund									
Personal Services	\$358.8	\$385.7	\$403.3	\$386.1	(\$17.2)	-4.3%	\$411.9	\$25.8	6.7%
Fringe Benefits	122.2	134.2	136.7	138.8	2.1	1.5%	151.5	12.7	9.1%
Other Expenses	173.7	172.7	185.1	183.0	(2.1)	-1.1%	187.9	4.9	2.7%
Equipment	10.9	11.0	14.8	23.0	8.2	55.4%	17.8	(5.2)	-22.6%
Student Financial Aid	76.7	81.2	90.4	104.4	14.0	15.5%	110.1	5.7	5.5%
Transfers	<u>41.5</u>	<u>43.5</u>	<u>46.3</u>	<u>64.0</u>	<u>17.7</u>	38.2%	<u>58.5</u>	<u>(5.5)</u>	-8.6%
Total Operating Fund	\$783.8	\$828.3	\$876.6	\$899.3	\$22.7	2.6%	\$937.7	\$38.4	4.3%
Research Fund Expenditures	<u>69.2</u>	<u>74.5</u>	<u>78.2</u>	<u>85.8</u>	<u>7.6</u>	9.7%	<u>94.8</u>	<u>9.0</u>	10.5%
<b>Total Expenditures / Transfers</b>	<b>\$853.0</b>	<b>\$902.8</b>	<b>\$954.8</b>	<b>\$985.1</b>	<b>\$30.3</b>	<b>3.2%</b>	<b>\$1,032.5</b>	<b>\$47.4</b>	<b>4.8%</b>
<b>Gain Prior to Transfer</b>	<b><u>\$9.3</u></b>	<b><u>\$12.5</u></b>	<b><u>\$4.8</u></b>	<b><u>\$10.9</u></b>			<b><u>\$1.0</u></b>		
Transfer from Reserves to State General Fund				<u>(8.0)</u>			<u>(15.0)</u>		
<b>Net Gain (Loss)</b>				<b><u>\$2.9</u></b>			<b><u>(\$14.0)</u></b>		

# University of Connecticut (Storrs & Regional Campuses)

## Current Fund Revenues & Expenditures Budget

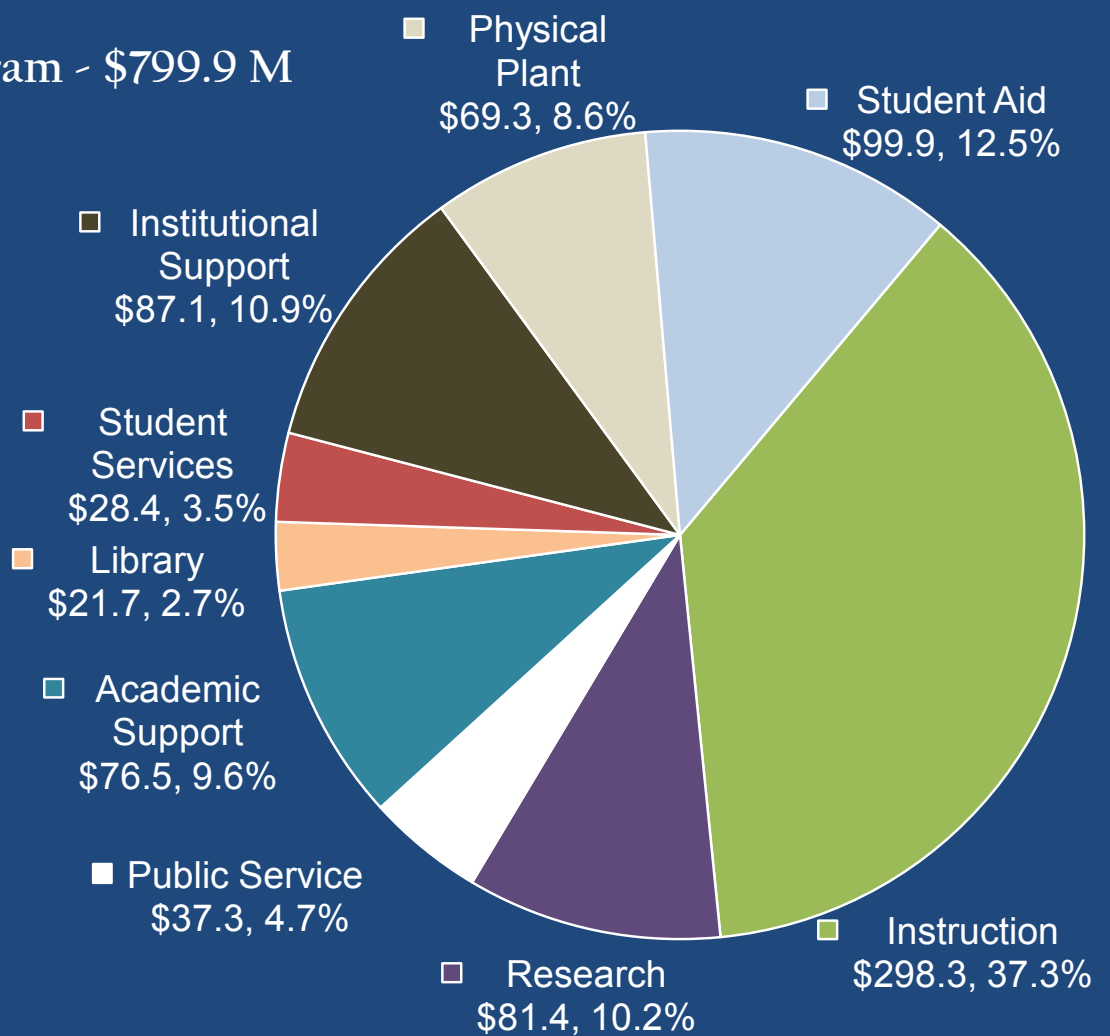
### Fiscal Year 2011 (in millions)

#### Total Revenues by Source - \$1,033.5 M



#### E & G Expenditures by Program - \$799.9 M

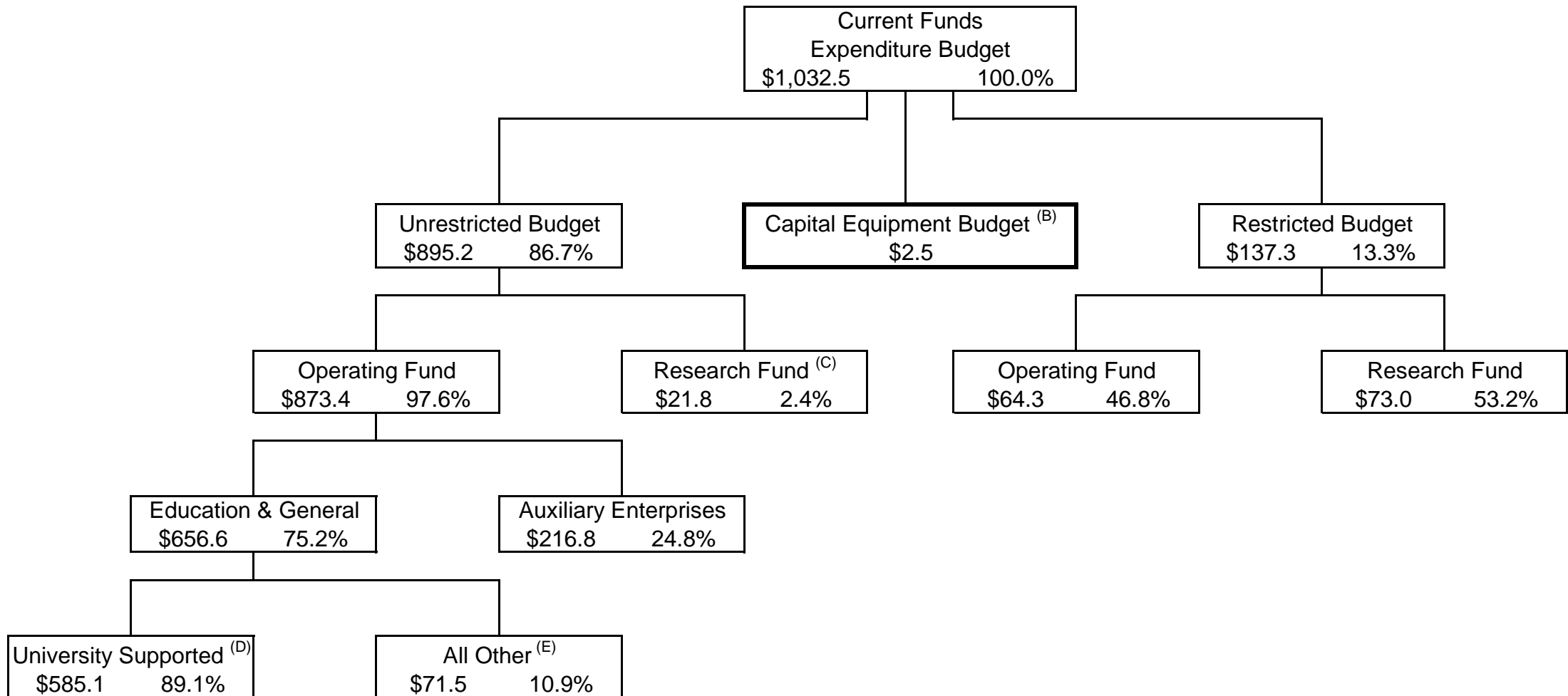
Excludes E&G Transfers (\$15.8 M), Auxiliary Enterprises (\$216.8 M) & Transfer to State (\$15.0M)



# University of Connecticut (Storrs & Regional Campuses)

## Total Current Funds Expenditure Budget (in millions) <sup>(A)</sup> - % by Categories

### FY 2011



<sup>(A)</sup> Includes transfers for Debt Service and construction projects.

<sup>(B)</sup> The Capital Equipment Budget, funded by UCONN 2000, is shown for illustrative purposes only and is not included in the Current Funds Expenditure Budget figures.

<sup>(C)</sup> This amount represents grant indirects (F&A) funding only. Sponsored grants are reflected in the restricted portion of the budget.

<sup>(D)</sup> Primary revenue sources are the State Appropriation and tuition receipts.

<sup>(E)</sup> Primarily E&G Enterprise activities (e.g., Continuing Studies, MBA, etc...).

University of Connecticut (Storrs & Regional Campuses)  
Current Funds Budget  
FY 2011

	TOTAL	E & G	AUXILIARY	UNRESTRICTED	RESTRICTED
<b>Revenues</b>					
<b>Operating Fund</b>					
State Support					
State Appropriation/Allotment	\$ 235,541,587	\$ 235,541,587	\$	\$ 235,541,587	\$
Fringe Benefits	96,525,205	96,525,205		96,525,205	
Total State Support	332,066,792	332,066,792		332,066,792	
Student Tuition & Fees-Gross	378,378,624	342,314,513	36,064,111	378,378,624	
Tuition Waiver Discounts	(47,431,779)	(47,431,779)		(47,431,779)	
Net Student Tuition & Fees	330,946,845	294,882,734	36,064,111	330,946,845	
Grants & Contracts	55,510,013	54,534,133	975,880	2,010,000	53,500,013
Private Gifts & Grants	23,400,000	13,989,350	9,410,650	13,000,000	10,400,000
Investment Income	1,151,330	1,101,330	50,000	748,895	402,435
Sales/Services of Educational Depts	14,884,308	14,884,308		14,884,308	
Sales/Services Auxiliary Enterprises	170,246,704		170,246,704	170,246,704	
Other Revenue	10,446,353	10,446,353		10,446,353	
<b>Total Operating Fund</b>	\$ 938,652,345	\$ 721,905,000	\$ 216,747,345	\$ 874,349,897	\$ 64,302,448
<b>Research Fund</b>					
Research Grants and Contracts	94,828,000	94,828,000		21,810,000	73,018,000
<b>Total Revenues</b>	\$ 1,033,480,345	\$ 816,733,000	\$ 216,747,345	\$ 896,159,897	\$ 137,320,448
<b>Expenditures/Transfers</b>					
<b>Education and General (E&amp;G):</b>					
Instruction	\$ 298,286,142	\$ 298,286,142	\$	\$ 293,406,622	\$ 4,879,520
Research	81,442,129	81,442,129		6,628,430	74,813,699
Public Service	37,255,619	37,255,619		21,484,668	15,770,951
Academic Support	76,496,007	76,496,007		73,997,016	2,498,991
Library	21,715,899	21,715,899		21,675,498	40,401
Student Services	28,374,330	28,374,330		28,326,385	47,945
Institutional Support	87,124,271	87,124,271		87,124,271	
Physical Plant	69,280,403	69,280,403		69,280,403	
Student Aid	99,931,136	99,931,136		60,662,195	39,268,941
<b>Sub-Total Education and General</b>	799,905,936	799,905,936		662,585,488	137,320,448
<b>E&amp;G &amp; Research Transfers/Debt Retirement</b>	15,796,164	15,796,164		15,796,164	
<b>Total Education and General</b>	\$ 815,702,100	\$ 815,702,100	\$	\$ 678,381,652	\$ 137,320,448
<b>Auxiliary Enterprises</b>					
Expenditures	169,615,794		169,615,794	169,615,794	
Mandatory Transfers for Debt Retirement	12,597,593		12,597,593	12,597,593	
<b>Auxiliary Expend. / Mandatory Trans</b>	\$ 182,213,387	\$	\$ 182,213,387	\$ 182,213,387	\$
Non-Mandatory Transfers	34,533,958		34,533,958	34,533,958	
<b>Total Auxiliary Enterprises</b>	\$ 216,747,345	\$	\$ 216,747,345	\$ 216,747,345	\$
<b>Total Expenditures/Transfers</b>	\$ 1,032,449,445	\$ 815,702,100	\$ 216,747,345	\$ 895,128,997	\$ 137,320,448
<b>Gain prior to Transfer*</b>	\$ 1,030,900	\$ 1,030,900	\$ 0	\$ 1,030,900	\$ 0
Transfer to State General Fund	(15,000,000)				
<b>Net Loss</b>	\$ (13,969,100)				

\* The \$1.0 million gain is for the reserve repayment for the November 2001 drawdown of \$11.5 million for the Towers Dining Center and Student Union.

University of Connecticut (Storrs & Regional Campuses)  
 Current Funds Budget Supporting Schedule for Selected Revenues  
 Fiscal Year 2011

**Revenues**

**Tuition & Fees**

Tuition (After Discounts: \$240.1M)	\$287,534,257
Center for Continuing Studies	
Credit Fees	11,934,000
Non-Credit Fees	3,400,000
Other Course Fees	26,470,794
Other Fees	18,833,407
General University Fee	30,206,166

**Total Tuition and Fees** **\$378,378,624**

**Grants and Contracts (Operating Fund)**

Miscellaneous Grants and Contracts	\$17,542,475
Department of Agriculture	4,283,597
Federal Financial Aid Grants	21,733,941
State Financial Aid Grants	11,950,000

**Total Grants and Contracts** **\$55,510,013**

**Sales/Services of Auxiliary Enterprises**

Jorgensen Center for Performing Arts	\$970,000
Athletic Department	30,973,071
Health Services	1,804,000
Student Union & Student Activities	1,149,250
Residential Life <sup>(A)</sup>	78,988,969
Dining Services <sup>(B)</sup>	56,163,836
Off Campus Student Services	7,000
Career Services	65,578
One Card	125,000

**Total Sales/Services of Auxiliary Enterprises** **\$170,246,704**

<sup>(A)</sup> Includes Residential Rentals as well as dormitories.

<sup>(B)</sup> Includes Board Fee revenue and Cash Sales Operations.

# University of Connecticut (Storrs & Regional Campuses)

## Auxiliary Enterprise Budgets

FY 2011

	Residential Life <sup>(A)</sup>	Dining Services <sup>(B)</sup>	Athletics <sup>(C)</sup>	Jorgensen	Health Services	Student Activities	Student Union	Other Student Affairs <sup>(D)</sup>	Total
<b>Revenues</b>									
Sales & Services	\$78,988,969	\$56,163,836	\$30,973,071	\$970,000	\$1,804,000	\$636,250	\$513,000	\$197,578	\$170,246,704
Tuition/Fee/Other	300,000	30,000	15,344,311	1,745,541	10,096,420	4,641,875	3,067,177	1,864,667	37,089,991
Gifts/Endowment	<u>0</u>	<u>0</u>	<u>9,322,000</u>	<u>65,000</u>	<u>0</u>	<u>10,000</u>	<u>0</u>	<u>13,650</u>	<u>9,410,650</u>
<b>Total Revenues</b>	<b>\$79,288,969</b>	<b>\$56,193,836</b>	<b>\$55,639,382</b>	<b>\$2,780,541</b>	<b>\$11,900,420</b>	<b>\$5,288,125</b>	<b>\$3,580,177</b>	<b>\$2,075,895</b>	<b>\$216,747,345</b>
<b>Expenditures</b>									
Personal Svcs & Fringe Benefits	\$22,228,006	\$9,293,134	\$23,251,752	\$1,116,458	\$8,862,038	\$3,677,226	\$2,475,805	\$4,501,300	\$75,405,719
Contractuals & Commodities	19,026,406	33,750,122	21,175,496	1,546,083	1,513,980	1,363,205	1,000,984	1,023,058	80,399,334
Scholarships	300,000	30,000	10,458,662	55,000	12,000	130,000	25,000	11,855	11,022,517
Other Expenses/Transfers	<u>37,734,557</u>	<u>13,120,580</u>	<u>753,472</u>	<u>63,000</u>	<u>1,512,403</u>	<u>117,694</u>	<u>78,388</u>	<u>(3,460,318)</u>	<u>49,919,775</u>
<b>Total Expenditures</b>	<b>\$79,288,969</b>	<b>\$56,193,836</b>	<b>\$55,639,382</b>	<b>\$2,780,541</b>	<b>\$11,900,420</b>	<b>\$5,288,125</b>	<b>\$3,580,177</b>	<b>\$2,075,895</b>	<b>\$216,747,345</b>
<b>Total Net Gain (Loss)</b>	<b><u>\$0</u></b>	<b><u>\$0</u></b>	<b><u>\$0</u></b>	<b><u>\$0</u></b>	<b><u>\$0</u></b>	<b><u>\$0</u></b>	<b><u>\$0</u></b>	<b><u>\$0</u></b>	<b><u>\$0</u></b>

(A) Residential Life includes the activities of Hilltop Apartment Rentals and Residential Rental properties.

(B) Dining Services includes the activities of Dining Cash Operations.

(C) Does not include an estimate for post season activity.

(D) Other Student Affairs includes the activities of the One Card Office, Student Affairs IT, Off Campus Student Services and Career Services.

University of Connecticut  
Storrs & Regional Campuses  
State Appropriation

	FY 2010				FY 2011		
	UConn Requested <u>Appropriation</u>	HB 6802 <u>9/1/2009</u>	Gov Reduction <u>9/22/2009</u>	Adjusted <u>Appropriation</u>	UConn Requested <u>Appropriation</u>	HB 6802 <u>9/1/2009</u>	HB 5018 <u>4/14/2010</u>
<b>Operating Fund</b>	\$246,820,430	\$222,447,810	(\$2,280,852)	\$220,166,958	\$258,688,928	\$222,447,810	\$219,793,819
<b>Tuition Freeze</b>	4,803,530	4,741,885		4,741,885	4,865,975	4,741,885	4,741,885
<b>Regional Campus</b>	7,418,673	8,002,420		8,002,420	7,463,185	8,375,559	8,375,559
<b>Vet Diagnostic Lab</b>	103,000	100,000		100,000	106,090	100,000	100,000
<b>Total</b>	<b>\$259,145,633</b>	<b>\$235,292,115</b>	<b>(\$2,280,852)</b>	<b>\$233,011,263</b>	<b>\$271,124,178</b>	<b>\$235,665,254</b>	<b>\$233,011,263</b> <sup>A</sup>

<sup>A</sup> Total appropriation for FY11 represents the amount included in House Bill 5018 passed on April 14, 2010 and does not include year-end accounting accruals which are included in the budget.

# University of Connecticut (Storrs Campus)

## Schedule of Costs for an Undergraduate Student

Fiscal Years 2010 and 2011

	In-State Undergraduate				Out-of-State Undergraduate			
	FY 2010 (Annual) Approved		FY 2011 (Annual) Proposed		FY 2010 (Annual) Approved		FY 2011 (Annual) Proposed	
	Amount	%	Amount	%	Amount	%	Amount	%
Tuition, Full-time	\$ 7,632	6.00%	\$ 8,064	5.66%	\$ 23,232	6.02%	\$ 24,528	5.58%
General University Fee	1,584	6.45%	1,656	4.55%	1,584	6.45%	1,656	4.55%
Other Fees:								
Student Newspaper	14		14		14		14	
Student Government (USG)	86		86		86		86	
WHUS	18		18		18		18	
Student Union (SUBOG)	46		46		46		46	
UCONN TV	10		10		10		10	
Transit Fee	70		70		70		70	
Student Union Building Fee	26		26		26		26	
Infrastructure Maintenance	400	5.26%	426	6.50%	400	5.26%	426	6.50%
Subtotal Other Fees	670		696		670		696	
<b>Total Tuition &amp; Mandatory Fees</b>	<b>\$ 9,886</b>	<b>5.87%</b>	<b>\$ 10,416</b>	<b>5.36%</b>	<b>\$ 25,486</b>	<b>5.97%</b>	<b>\$ 26,880</b>	<b>5.47%</b>
Room Fee	5,396	6.01%	5,774	7.01%	5,396	6.01%	5,774	7.01%
Board Fee - Ultimate Meal Plan <sup>A</sup>	4,724	7.02%	5,008	6.01%	4,724	7.02%	5,008	6.01%
Grand Total <sup>A</sup>	<u>\$ 20,006</u>	<u>6.18%</u>	<u>\$ 21,198</u>	<u>5.96%</u>	<u>\$ 35,606</u>	<u>6.12%</u>	<u>\$ 37,662</u>	<u>5.77%</u>
Board Fee - Value Meal Plan	4,506	7.03%	4,778	6.04%	4,506	7.03%	4,778	6.04%
<b>Grand Total</b>	<b>\$ 19,788</b>	<b>6.17%</b>	<b>\$ 20,968</b>	<b>5.96%</b>	<b>\$ 35,388</b>	<b>6.11%</b>	<b>\$ 37,432</b>	<b>5.78%</b>

<sup>A</sup> The Ultimate Meal Plan represents the most popular meal plan available (Per semester: unlimited meals, 500 points, 35 flex passes). Lower cost meal plan options are available.

# University of Connecticut (Storrs Campus)

## Schedule of Costs for a Graduate Student

Fiscal Years 2010 and 2011

	In-State Graduate				Out-of-State Graduate			
	FY 2010 (Annual) Approved		FY 2011 (Annual) Proposed		FY 2010 (Annual) Approved		FY 2011 (Annual) Proposed	
	Amount	%	Amount	%	Amount	%	Amount	%
Tuition, Full-time	\$ 9,450	6.06%	\$ 9,972	5.52%	\$ 24,534	6.07%	\$ 25,884	5.50%
General University Fee	1,170	6.56%	1,224	4.62%	1,170	6.56%	1,224	4.62%
Other Fees:								
Student Activity Fee	26		26		26		26	
Graduate Matriculation Fee	84		84		84		84	
Transit Fee	70		70		70		70	
Student Union Building Fee	26		26		26		26	
Infrastructure Maintenance	400	5.26%	426	6.50%	400	5.26%	426	6.50%
Subtotal Other Fees	606		632		606		632	
<b>Total Tuition &amp; Mandatory Fees</b>	<b>\$ 11,226</b>	<b>5.97%</b>	<b>\$ 11,828</b>	<b>5.36%</b>	<b>\$ 26,310</b>	<b>6.03%</b>	<b>\$ 27,740</b>	<b>5.44%</b>
Room Fee	6,356	9.81%	6,802	7.02%	6,356	9.81%	6,802	7.02%
Board Fee - Ultimate Meal Plan <sup>A</sup>	4,724	7.02%	5,008	6.01%	4,724	7.02%	5,008	6.01%
Grand Total <sup>A</sup>	<u>\$ 22,306</u>	<u>7.26%</u>	<u>\$ 23,638</u>	<u>5.97%</u>	<u>\$ 37,390</u>	<u>6.78%</u>	<u>\$ 39,550</u>	<u>5.78%</u>
Board Fee - Value Meal Plan	4,506	7.03%	4,778	6.04%	4,506	7.03%	4,778	6.04%
<b>Grand Total</b>	<b>\$ 22,088</b>	<b>7.26%</b>	<b>\$ 23,408</b>	<b>5.98%</b>	<b>\$ 37,172</b>	<b>6.78%</b>	<b>\$ 39,320</b>	<b>5.78%</b>

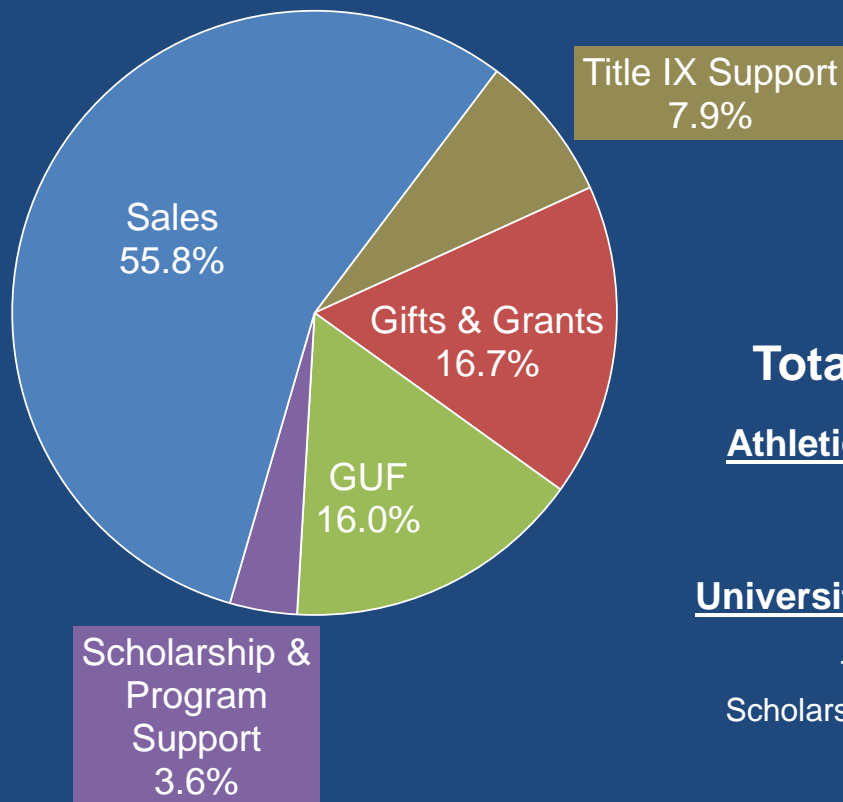
<sup>A</sup> The Ultimate Meal Plan represents the most popular meal plan available (Per semester: unlimited meals, 500 points, 35 flex passes). Lower cost meal plan options are available.

Please note that for Graduate students living in Graduate student housing, the meal plan is optional.

# University of Connecticut

## Division of Athletics & Recreational Services

### Proposed Budget for Fiscal Year 2011



**Total Revenue: \$55.6M**

**Athletics Share: 72.5% \$40.3M**

Sales - \$31.0M

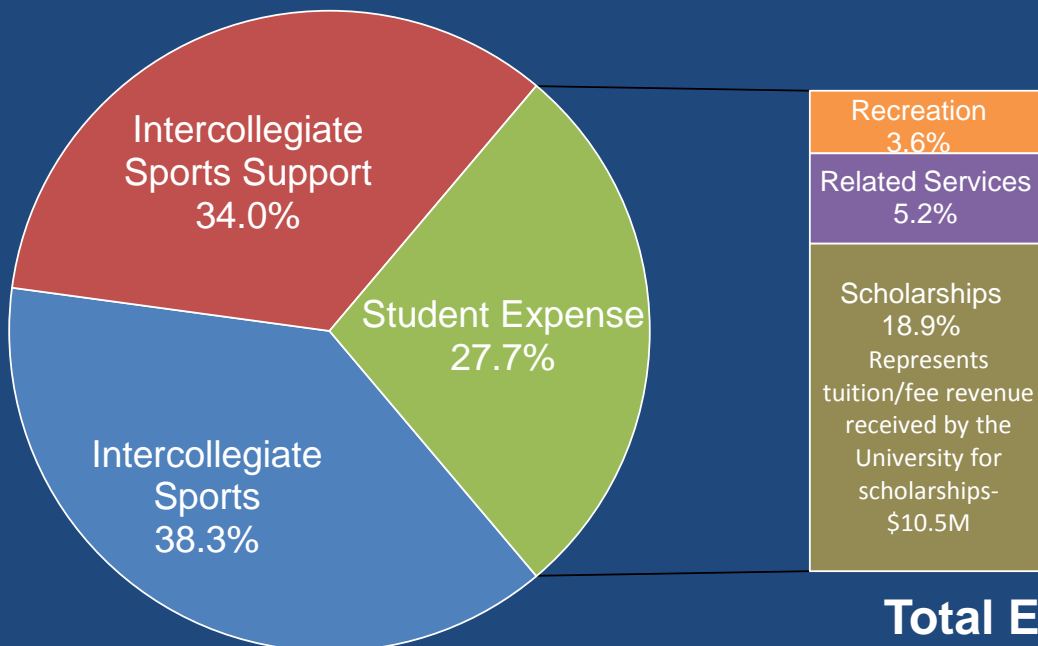
Gifts & Grants - \$9.3M

**University Support: 27.5% \$15.3M**

GUF - \$8.9M

Title IX Support - \$4.4M

Scholarship & Program Support - \$2.0M



**Total Expense: \$55.6M**

**Intercollegiate: 72.3% \$40.2M**

Sports - \$21.3M

Not Sport-Specific - \$18.9M

**Student Expense: 27.7% \$15.4M**

Source: Division of Athletics & Recreational Services. Does not include post season activity.

**University of Connecticut** (Storrs & Regional Campuses)  
**Schedule of Total Financial Aid and Tuition Funded Financial Aid**  
 FY's 2007-2011

<b><u>Total Financial Aid</u></b>	<b><u>FY07</u></b>	<b><u>FY08</u></b>	<b><u>FY09</u></b>	<b><u>FY10 Forecast</u></b>	<b><u>FY11 Budget</u></b>
Need-Based					
Grants	\$50.7	\$54.1	\$59.6	\$68.6	\$71.4
Work Study/Student Labor	7.7	8.4	9.0	10.4	9.9
<b>Total Need-Based</b>	<b>\$58.4</b>	<b>\$62.5</b>	<b>\$68.6</b>	<b>\$79.0</b>	<b>\$81.3</b>
University Scholarships	\$24.9	\$25.4	\$28.9	\$33.7	\$37.1
Non-University Scholarships <sup>A</sup>	9.3	10.4	10.9	12.3	\$13.1
Other Student Labor	6.2	7.0	8.7	7.6	7.8
Loans	118.2	128.4	140.8	163.3	171.7
Tuition Waivers	37.8	41.9	45.3	45.0	47.4
<b>Total Financial Aid <sup>B</sup></b>	<b><u>\$254.7</u></b>	<b><u>\$275.7</u></b>	<b><u>\$303.2</u></b>	<b><u>\$340.9</u></b>	<b><u>\$358.4</u></b>
<b><u>Tuition Funded Financial Aid</u></b>	<b><u>FY07</u></b>	<b><u>FY08</u></b>	<b><u>FY09</u></b>	<b><u>FY10 Forecast</u></b>	<b><u>FY11 Budget</u></b>
Need-Based Grants	\$31.3	\$28.5	\$32.3	\$36.5	\$39.2
Need-Based Wk. Study Match / Std. Labor <sup>C</sup>	3.0	3.1	3.1	3.5	3.3
Other Student Labor	2.3	2.3	2.4	2.0	2.2
Scholarships	11.4	11.8	14.1	17.6	20.7
Tuition Waivers	37.8	41.9	45.3	45.0	47.4
<b>Total Tuition Funded Financial Aid</b>	<b><u>\$85.8</u></b>	<b><u>\$87.6</u></b>	<b><u>\$97.2</u></b>	<b><u>\$104.6</u></b>	<b><u>\$112.8</u></b>
Total Tuition Funded as a % of Gross Tuition Revenue	39.5%	37.8%	38.1%	38.5%	39.2%
Tuition Funded Need-Based as a % of Net Tuition Revenue	19.1%	16.6%	16.8%	17.7%	17.7%

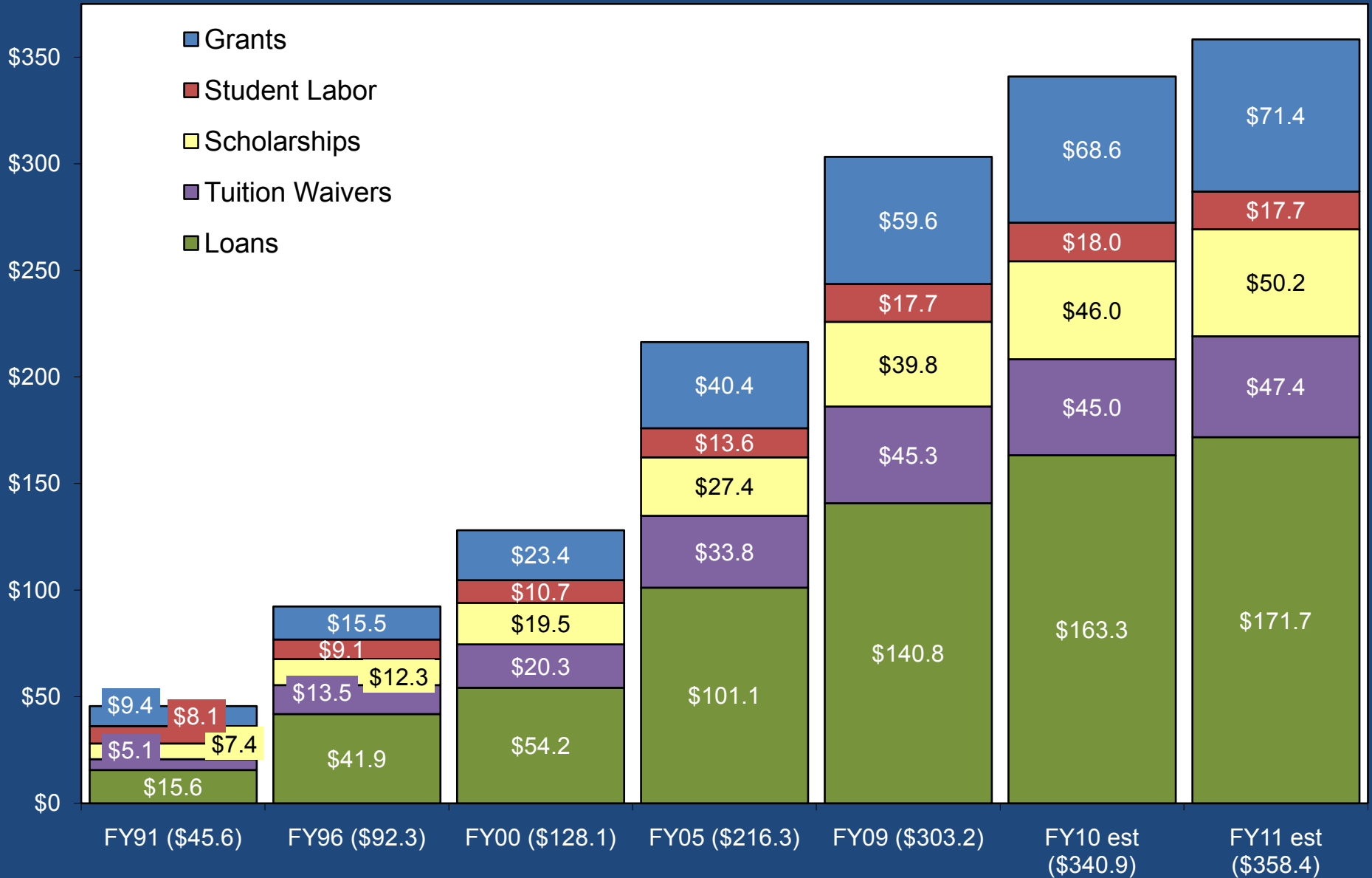
<sup>A</sup> FY07 - FY10 actuals and forecast have been restated.

<sup>B</sup> Scholarships given directly to students from outside organizations and student loans (mostly Federal funded) are not included in the Current Funds budget.

<sup>C</sup> Student Labor has averaged \$1.8-\$2.0 million per year.

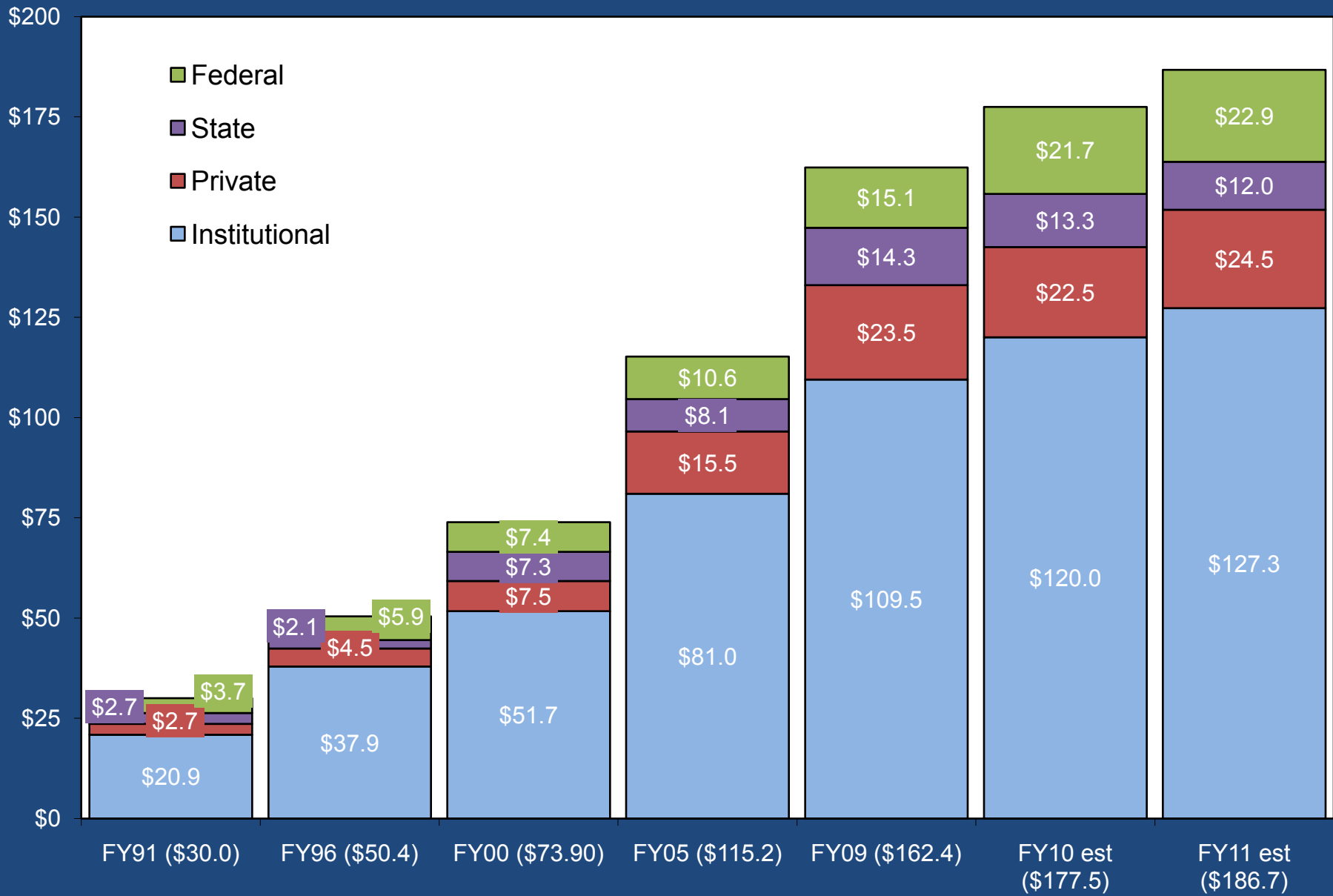
# University of Connecticut (Storrs & Regional Campuses)

## Student Financial Aid by Type (in millions) - Selected Fiscal Years



# University of Connecticut (Storrs & Regional Campuses)

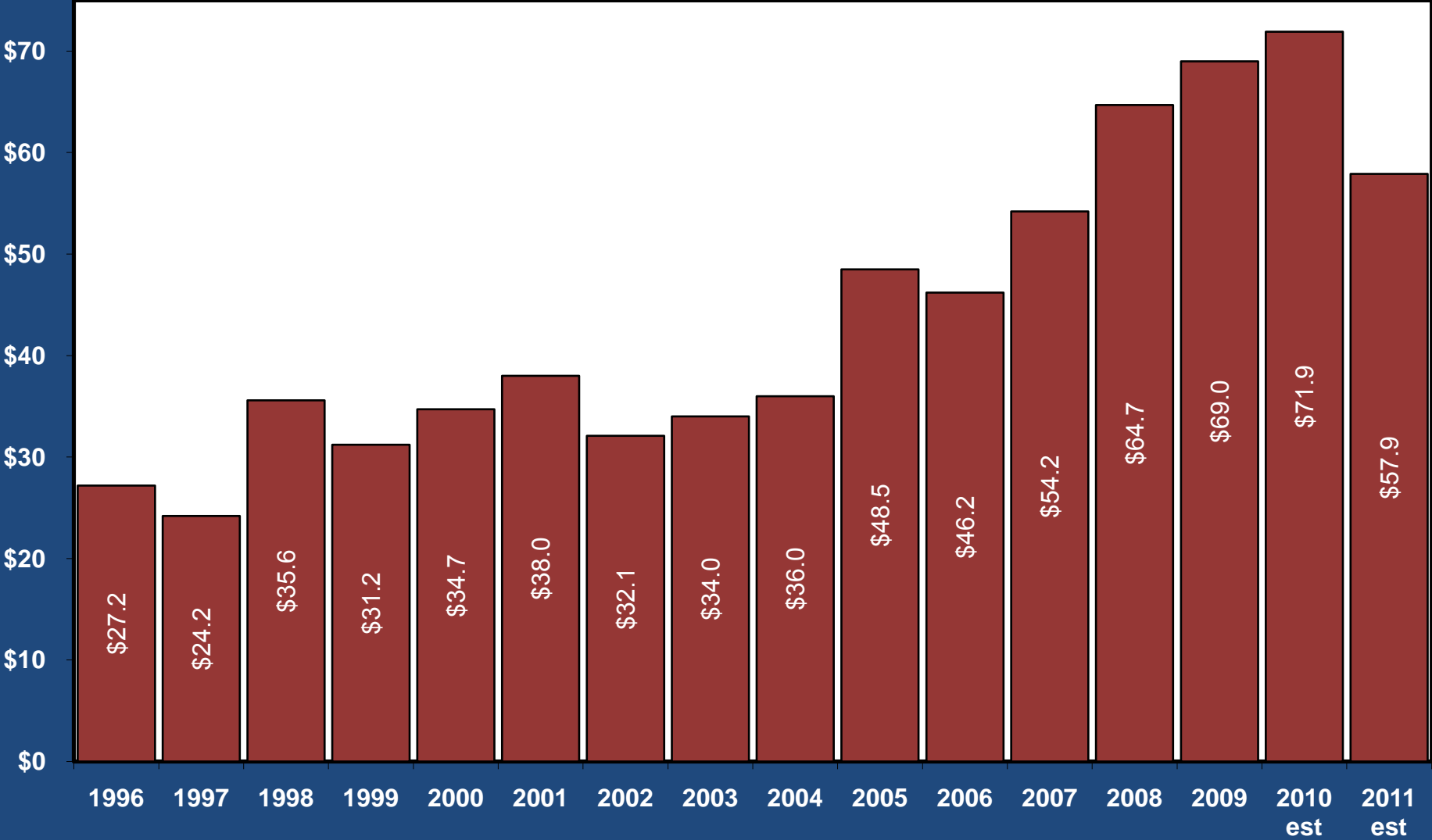
## Student Financial Aid by Source-Excluding Loans (in millions) - Selected Fiscal Years



# University of Connecticut (Storrs & Regional Campuses)

## Current Funds Unrestricted Fund Balance (in millions)

### Fiscal Years 1996-2011



From FY04 forward, \$1 million of the net gain represents a reserve repayment for the November 2001 drawdown of \$11.5 million for the Towers Dining Center and Student Union. FY11 estimate reflects a \$15 million required transfer to the State General Fund net of the reserve repayment.



University of Connecticut  
*Office of the Vice President and  
Chief Financial Officer*

June 10, 2010

TO: Members of the Board of Trustees

FROM: Richard D. Gray  
Vice President and Chief Financial Officer

Paul R. McDowell  
Chief Financial Officer

RE: State Appropriation Current Services Request for the Biennium Fiscal Years  
2012 and 2013 for the University of Connecticut, Storrs & Regional Campuses

RECOMMENDATION:

That the Board of Trustees approve a Current Services State Appropriation Request for the Biennium Fiscal Years 2012 and 2013 as follows: \$254.0 million for Fiscal Year 2012 and \$246.9 million for Fiscal Year 2013 for the Storrs-based program.

BACKGROUND:

The FY 2012 Current Services State Appropriation Request is \$254.0 million. The University is requesting Collective Bargaining funding for settled contracts of \$11.6 million, New Building Openings Operating and Maintenance (O&M) funding of \$0.6 million, and 27<sup>th</sup> pay period funding of \$8.8 million. Also, the University has budgeted \$107.7 million for Current Services fringe benefits, which are not appropriated directly to the University. The FY 2012 Current Services State Appropriation Request represents an increase over the FY 2011 level of \$21.0 million.

The FY 2013 Current Services State Appropriation Request of \$246.9 million is predicated upon the FY 2012 Current Services State Appropriation request of \$254.0 million. In addition, the University is requesting New Building Openings Operating and Maintenance (O&M) funding of \$1.1 million, and Retirement Program Payout funding of \$0.6 million. Also, the University has budgeted \$106.5 million for Current Services fringe benefits, which are not appropriated directly to the University. The FY 2013 Current Services State Appropriation Request represents a decrease over the FY 2012 level of \$7.1 million.

*An Equal Opportunity Employer*

352 Mansfield Road Unit 2122  
Storrs, Connecticut 06269-2122

Telephone: (860) 486-3455  
Facsimile: (860) 486-1070

University of Connecticut  
Storrs & Regional Campuses  
Current Services State Appropriation

**FY 2011 Approved Appropriation**

Operating Fund	\$219,793,819
Tuition Freeze	4,741,885
Regional Campus	8,375,559
Vet Diagnostic Lab	100,000

**FY 2011 Total Approved Appropriation**

**\$233,011,263**

Collective Bargaining - Settled Contracts	\$11,591,059
27th Pay Period (only included in FY12 request)	8,779,591
New Buildings Operations and Maintenance	593,965

**FY 2012 Requested Appropriation**

**\$253,975,878**

Collective Bargaining - Settled Contracts	\$0
New Buildings Operations and Maintenance	1,129,415
Retirement Incentive Program Payout (Year 1 of 3)	595,729

**FY 2013 Requested Appropriation**

**\$246,921,431**